



CONCRETE POLISHING



Ultra Machine

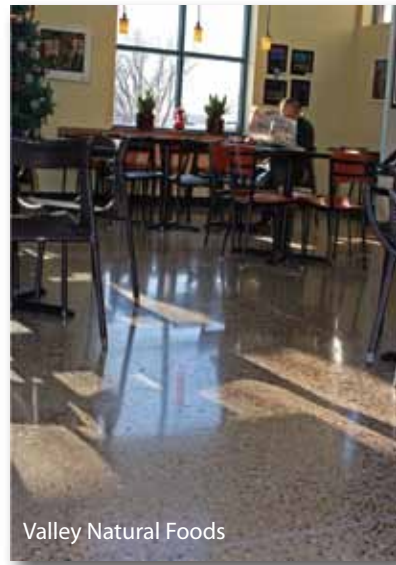
575 Schommer Drive
Hudson, WI 54016
715.386.8750
www.ConcreteArts.com



CONCRETE ARTS
ART WORK YOU CAN WALK ON



The Orchard



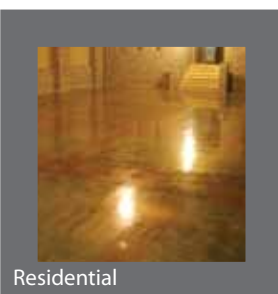
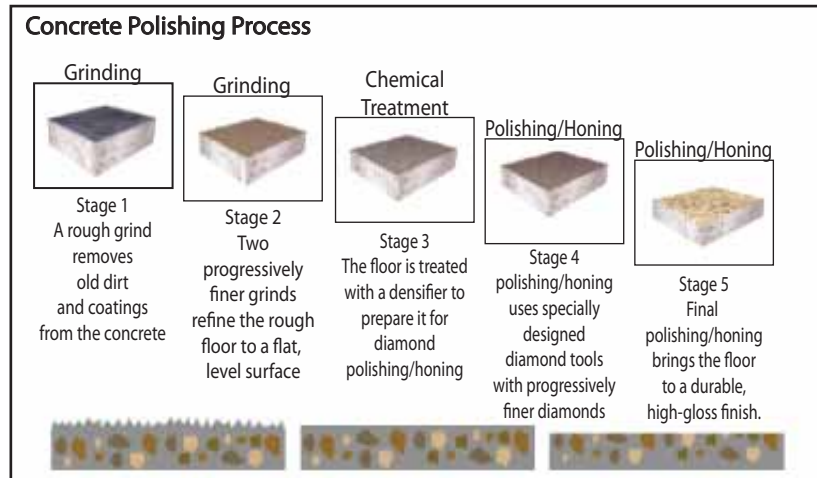
Valley Natural Foods



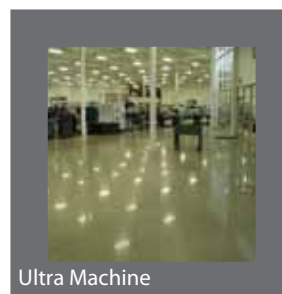
Hudson Hospital

Concrete Polishing Systems

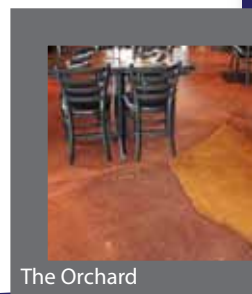
Concrete polishing is a sustainable decorative finishing option that is a top trend among schools, municipalities, retail, and industrial companies due to its low maintenance, design flexibility and durability. With the increasing demand to "Go Green," concrete polishing is the perfect solution to meet wants without giving up quality. And quality is just what Concrete Arts offers with more years of experience among competitors in the Midwest.



Residential



Ultra Machine



The Orchard

Specifications

It is crucial to the success of a project that all specifications are set in order. Specifications impact the schedule, cost and quality of the complete project. Knowing the importance, Concrete Arts developed specifications in fine details that map out the polishing nine step process that leaves no room for alterations or errors.



Modernistic

Concrete Polishing

- Stains, Dyes, and Integral Colors
- Grinding and Honing
- Floor Prep
- Shot Blasting

Schools VCT Floor Maintenance

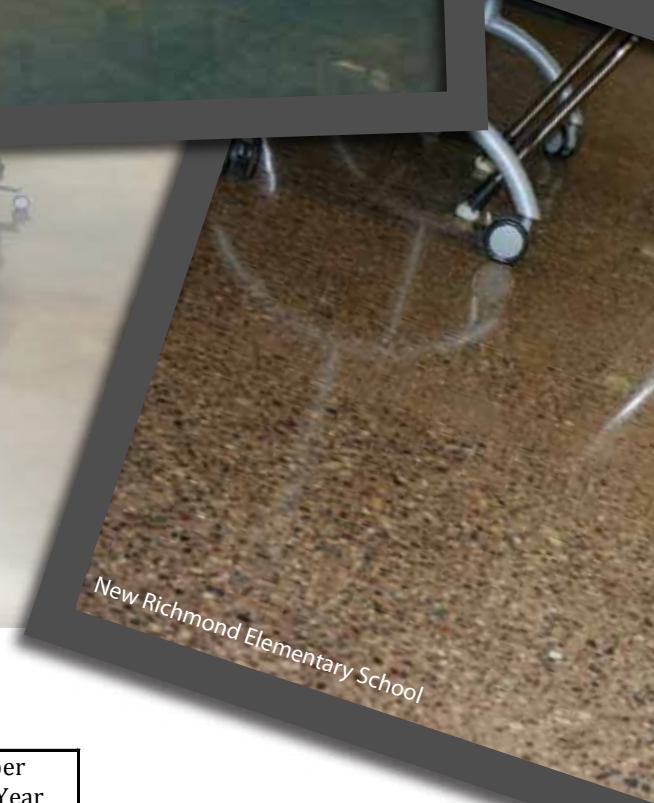
Polished Concrete	Frequency per School Year	Minutes per 1,000 sq.ft.	School Year Total Minutes per 1,000 sq.ft.	Cost per School Year \$/sq.ft.
Dust Mopping	180 (daily)	8	1440	\$0.2347
Spot Mopping	180 (daily)	8	1440	\$0.2347
Wet Mopping	108 (3x wk)	45	4860	\$0.7922
Spray Buffing	36 (1x wk)	48	1728	\$0.2817
Scrub Recoat	5(Sp/Nv/Fb/Ap)	120	600	\$0.0978
Strip/Finish	1 (Jul)	300	300	\$0.0489
Chemical Costs	NA	NA	NA	\$0.0340
TOTAL			10,368	\$1.7240

Schools Polished Concrete

Polished Concrete	Frequency per School Year	Minutes per 1,000 sq.ft.	School Year Total Minutes per 1,000 sq.ft.	Cost per School Year \$/sq.ft.
Dust Mopping	180 (daily)	8	1440	\$0.2347
Spot Mopping	180 (daily)	8	1440	\$0.2347
Diamond Cleaning	108 (3x wk)	3	324	\$0.0528
Spray Buffing	NA	NA	NA	NA
Scrub Recoat	NA	NA	NA	NA
Strip/Refinish	NA	NA	NA	NA
Pad Cost	NA	NA	NA	\$0.0518
TOTAL			3,204	\$0.5740



Osceola Airport Hangar



New Richmond Elementary School

Main Benefits

- Low Maintenance Costs
- Increased Durability
- Environmental Impact
- Sustainable Construction
- Low Life Cycle Costs
- Light Reflectivity
- Design Flexibility
- Aesthetic Value

Concrete Polishing Systems

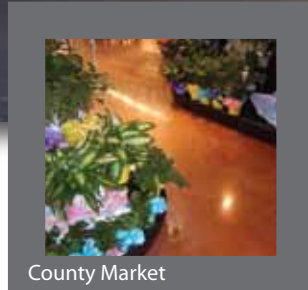
www.ConcreteArts.com



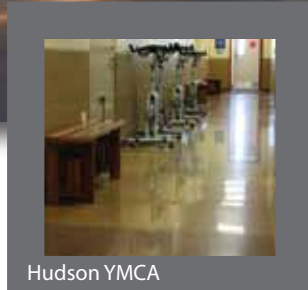
Target Field



Upper Iowa University



County Market



Hudson YMCA

Concrete Polishing is a concrete substrate that is chemically hardened and ground with successively finer diamond abrasives until a smooth, dense, and abrasion resistant surface is achieved with no film forming sealers or coatings.

Concrete Arts was one of the first companies in the Midwest to adopt and master concrete polishing. Concrete Arts is now known as the premier polishing company. From small residential projects to major construction sites like the new Target Field Twins Stadium, Concrete Arts is top choice for any polishing need.

Check out our website for more photos and project profiles on Concrete Polishing. www.ConcreteArts.com And become our friend on Facebook to stay up-to-date with the latest projects we have going on!

Sustainability with Design Flexibility

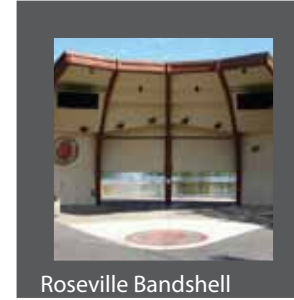
Sustainability: With the low maintenance costs, increased durability and low environmental impact, polished floors are quickly becoming a preferred flooring surface.

Custom polishing is easy to clean and doesn't require the timely and costly sealers, waxes and finishes to be applied. Due to the dense surface, it's highly abrasion and stain resistant. The floor doesn't show wear patterns and does not yellow or discolor over time.

Design Flexibility: To enhance the image of a custom polished concrete floor, add a dye in a solid color to patterns. We can add bold vibrant colors or the traditional earth tones to create the look you desire.



Stremmel Manufacturing



Roseville Bandshell

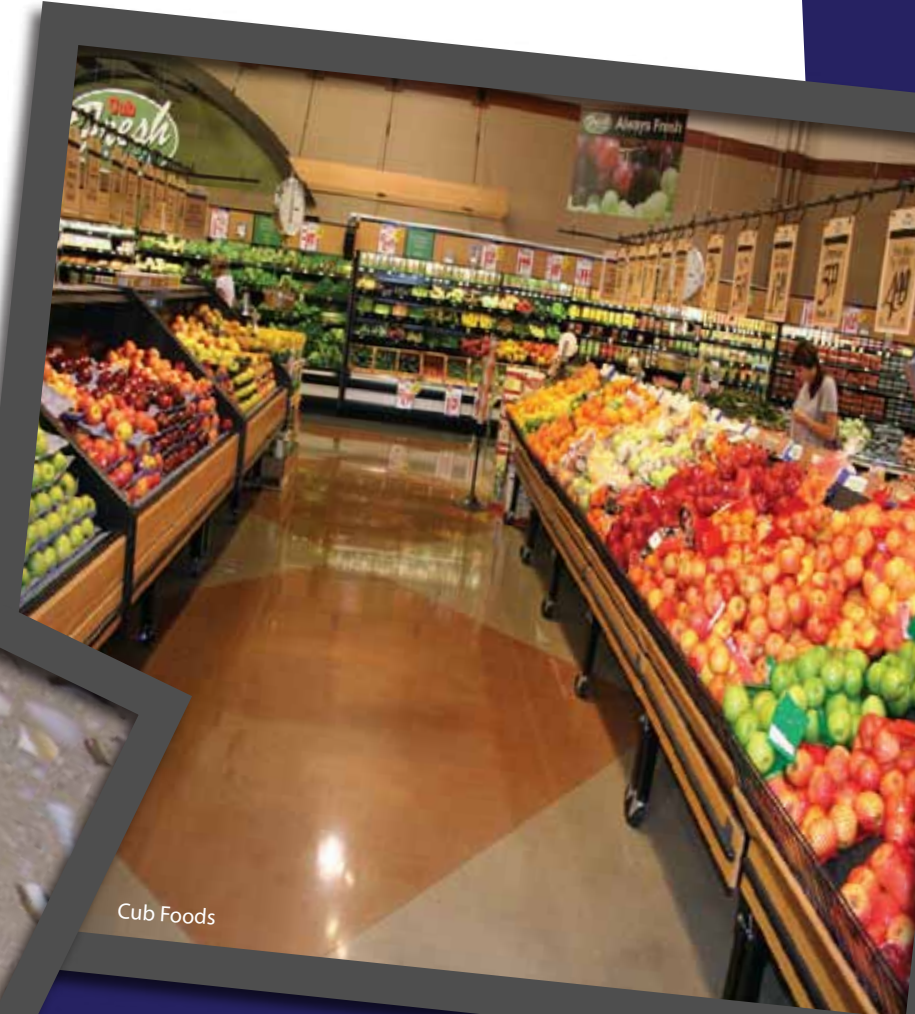


Water Park of America

Comparative Installation and Maintenance Costs

Cost Per Square Foot	Installed Cost	Annual Maintenance	Years Average Life	Replacement Costs	Total Expense Over 20 Years	Cost Per Square Foot Per Year
Vinyl Sheet Flooring	\$2.72	\$1.39	9	\$3.43	\$38.14	\$1.91
Vinyl Tile Flooring	\$1.23	\$1.47	15	\$1.60	\$32.76	\$1.64
Ceramic Mosaic Tile	\$6.48	\$1.22	20		\$30.88	\$1.54
Quarry Tile	\$5.78	\$0.58	20		\$30.18	\$1.51
Cement Terrazzo	\$8.50	\$0.46	20		\$20.10	\$1.01
Granite-Glaze	\$6.50	\$0.46	20		\$20.10	\$1.01
Polished Concrete	\$2.50	\$0.17			\$5.90	\$0.30

Based on a survey conducted by the National Terrazzo and Mosaic Association, the information above compares the cost per square foot of commonly used commercial flooring materials. This recent examination of flooring costs over a 20 year span illustrates not only some of the hidden costs involved in the purchase and installation of various materials. It also illustrates the dramatic difference in the cost of these materials. Comparative costs based on 10,000 square feet. Your costs may vary based on square footage, preparation needs, coloring, etc.



Cub Foods

Specialty Mix

Polished Topping System

Concrete Arts utilizes LifeTime Floors' topping systems of Artera, Modena and Mosaic. These three systems provide enduring beauty with high performance. Laid at 1/2 inch, these toppings are heavily loaded with decorative aggregates and specialty colors to give you just the right look you desire.

Artera, Modena, and Mosaic systems are highly polished surfaces that increase wear resistance and provide unlimited design flexibility. No sealers or waxes are needed which results in a very cost effective, low maintenance product.



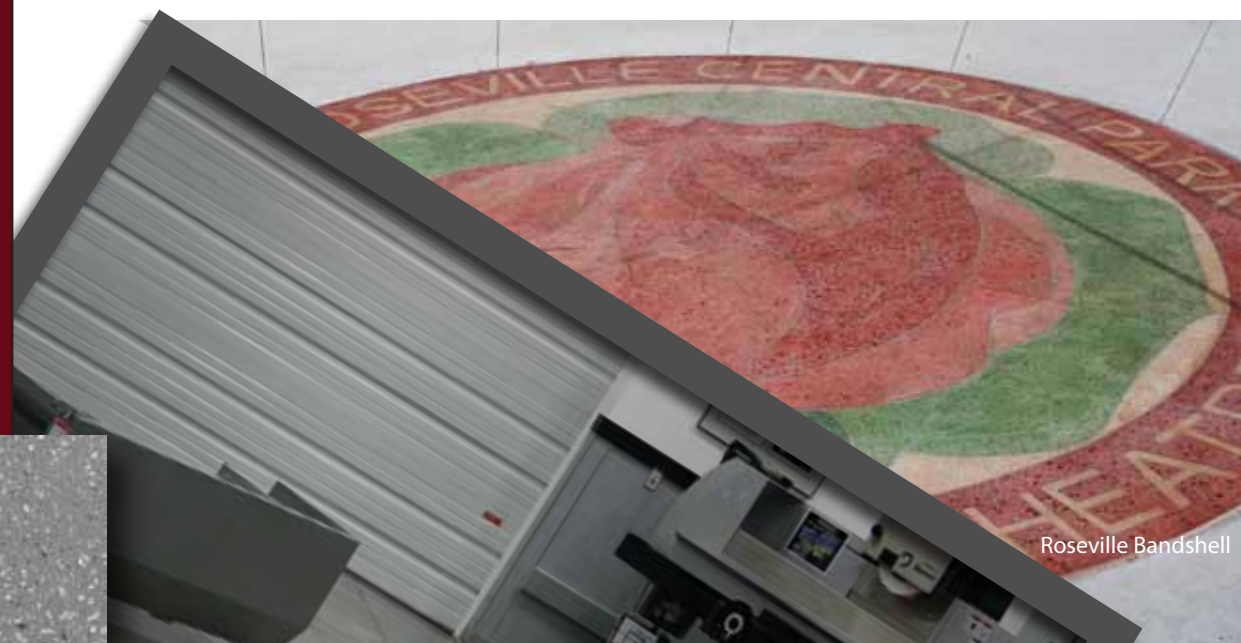
University of San Antonio



Residential Lofts



Commercial Kitchen



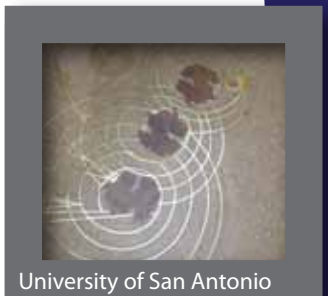
Roseville Bandshell



Productivity



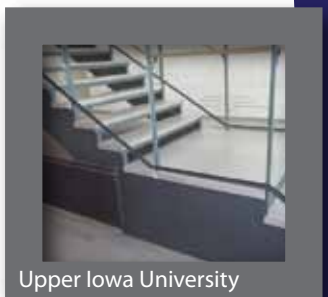
MSU Law Enforcement Center



University of San Antonio



Environmental Landscapes



Upper Iowa University

Polishable Overlays

Polishable overlays are a great way to achieve a Terrazzo look while gathering the benefits of polished concrete's low maintenance and high durability.

Artera: Artera flooring is a blend of cements, polymer fibers, color and specialty aggregates used to resurface existing concrete floors.

Modena: Modena is a high-strength, self-leveling, topping that resurfaces existing floors with a sand exposure.

Mosaic: Mosaic is a 'wet on wet' application, utilizing colored cements, specialty aggregates or glass that is ground down and polished to create a monolithic sustainable floor.

Precast Stair Treads

Many times stairs are often neglected when it comes to the design elements within beautifully constructed architectural buildings. Concrete Arts specializes in the design of a wide range of custom precast stair treads, as well as other precast items, including window sills, caps, countertops, landings and many other items. We offer precast stairs in many colors and finishes, including broomed, smooth troweled, exposed aggregate, sandblasted and polished concrete finishes.



Cub Foods